

IRVING BERLIN'S
**White
Christmas**

Music and Lyrics by Irving Berlin
Book by David Ives and Paul Blake
Directed by Michelle Koenen
Musically Directed by Theresa McKenzie Sullivan

**DECEMBER
2-18, 2022**

Evergreen Playhouse

Fridays & Saturdays | 7:30pm

Sundays | 2:00pm

December 10 performance at 2pm

Pay-What-You-Can Performance December 8 | 7:30pm

Additional Thursday Performance December 15 | 7:30pm

Tickets \$18 Adults | \$15 Students & Seniors

360-736-8628 | 226 West Center Street | Centralia, Washington

evergreenplayhouse.com

"White Christmas" is presented through special arrangement with Concord Theatricals, New York, NY.



SINCE 1959
EVERGREENPLAYHOUSE.COM
SEASON 63: 2022-2023



"WHITE CHRISTMAS"
IS SPONSORED BY:

HUBBUB

THIS SHOW'S SPONSOR

I'm Dreaming of a Colorful Christmas!



HUBBUB

A 3-minute walk from your Evergreen seat!



505 North Tower Avenue
Historic Downtown Centralia

Check us out during intermission!

hubbubshop.com



SHOP LOCAL. BUY HANDMADE.



CAST LIST

BOB.....	Noah McKenzieSullivan
PHIL.....	Sean-Patrick McNeal
SHELDRAKE/ENSEMBLE.....	Isaac McKenzieSullivan
GENERAL WAVERLY.....	Ed Thorpe
JIMMY/ENSEMBLE.....	Jordan McMahon
RITA.....	Michelle Lucero
RHODA.....	Nicole Galyean
TESSIE/SEAMSTRESS/ENSEMBLE.....	Emily Fitzgerald
BETTY.....	Melyssa Johnson
JUDY.....	Lizzie Conner
CIGARETTE GIRL/MRS. SNORING MAN/ENSEMBLE.....	Brittany Wilcox
MR. SNORING MAN/EZEKIEL.....	Dave Marsh
MIKE/ENSEMBLE.....	Karsten Tomlin
SHOW DANCE CAPTAIN/ENSEMBLE.....	Samantha Gunter
ASSISTANT SEAMSTRESS/ENSEMBLE.....	Asia Conner
MARTHA.....	Emilie Brown
SUSAN.....	Betty Snell

SHOW SPONSOR

The Diary of Anne Frank

BOB HOLLAND INSURANCE

BENEFIT SPECIALIST

AFFORDABLE • MULTIPLE COMPANIES

Family/Group Medical
Dental & Vision Plans
Senior Medical
Life Insurance

360.736.4740

INSUREWITHBOB.COM

SHOW SPONSOR

A Murder is Announced

**CUSTOM LOGO'D APPAREL
EMBROIDERY & SCREENPRINTING**

- T-SHIRTS • CAPS • BUSINESS ATTIRE
- TOTES/BAGS • SWEATSHIRTS • POLOS
- RESTAURANT • PROMO ITEMS

Low Minimums / Competitive Pricing / Personal Service

**THE
UNDERSHIRT
INC.**

Shari Blackwell

360-740-8048 • Chehalis, WA

WWW.THEUNDERSHIRT.COM

PRODUCTION CREW

DIRECTOR.....Michelle Koenen
VOCAL/MUSIC DIRECTOR.....Theresa McKenzieSullivan
STAGE MANAGER.....Danielle Kays
COSTUMES.....Allison Haugan
SET PIECES/PROPERTIES.....Alene Stewart
SET/DESIGN & CONSTRUCTION/SCENIC PAINTING.....Theresa McKenzieSullivan
SET CONSTRUCTION.....Isaac McKenzieSullivan, Mark Pendleton
LIGHT DESIGN.....Danielle Kays
SOUND OPERATOR.....Noah Lyons
LIGHT OPERATOR.....Cora Dailey

ACKNOWLEDGEMENTS

Centralia Community College Theater Department, Chip Duncan and Veterans Memorial Museum, Buddy's Home Furnishings, Harlequin Productions, Daniel Haugan, Stephen Lund, Centralia Community Church, Matthew Hawkins.

Founded in 1959, the Evergreen Playhouse has established itself as a vital part of the local arts community and is a non-profit organization dedicated to the advancement of the theatrical arts through education, performance, and support. We have been producing plays and bringing live theatre to the greater Lewis county area for over 60 years. The Evergreen Playhouse is run entirely on volunteer power; including the board, cast, crew, and committee members. For more information about the Playhouse and upcoming events, go to evergreenplayhouse.com

SHOW SPONSOR

Lend Me A Tenor

SHOW SPONSOR

Tuck Everlastina



O'Blarney's Irish Pub is the perfect spot to gather with family and friends, eat, drink and make memories.



Come in for our prime rib special starting at 5 p.m. Friday and Saturday, or see other daily offers on Facebook.

221 North Tower Avenue Centralia, WA 98531
360.807-4381

RECTANGLE GALLERY
& creative space

Art for every occasion, budget, and home.

209 N Tower Ave
Centralia WA
TheRectangleGallery.com



MUSICAL NUMBERS

ACT ONE

"Happy Holiday"	Bob, Phil, Sheldrake
"White Christmas"	Bob, Phil, Sheldrake, Ensemble
"Happy Holiday/Let Yourself Go"	Bob, Phil, Ensemble
"Love and the Weather"	Bob, Betty
"Sisters"	Betty, Judy
"The Best Things Happen While You're Dancing"	Phil, Judy, Quintet
"Snow"	Phil, Judy, Bob, Betty, Snoring Man, Mrs. Snoring Man, Ensemble
"What Can You Do With a General?"	Martha, Bob, Phil
"Let Me Sing And I'm Happy"	Martha
"Count Your Blessings Instead of Sheep"	Bob, Betty
"Blue Skies"	Bob, Ensemble

ACT TWO

"I Love A Piano"	Phil, Judy, Ensemble
"Falling Out Of Love Can Be Fun"	Martha, Betty, Judy
"Sisters (Reprise)"	Bob, Phil
"Love, You Didn't Do Right By Me/How Deep Is the Ocean"	Betty, Bob
"The Old Man"	Bob, Men
"Let Me Sing And I'm Happy (Reprise)"	Susan
"How Deep Is the Ocean (Reprise)"	Betty, Bob
"The Old Man (Reprise)"	Bob, Phil, Sheldrake, Men
"White Christmas"	Company

DIRECTOR'S NOTE

Step back into 1954 and "let yourself go" to Pinetree, Vermont, where the winter temperature is surprisingly as hot as the music. Enter a place where family, show business, military brotherhood, and friendship connect us all in the spirit of the holidays. Generosity of ourselves and our time is what connects us during periods of struggles and change.

Enjoy a tale of love, misunderstanding, and discovery set to Irving Berlin's iconic music. Sit back and settle down for a toe-tapping journey, and begin dreaming of a white Christmas.

I would like to extend my gratitude to the Board of Directors at the Evergreen Playhouse for providing me the opportunity to share my vision of this holiday show with you. I offer a special thank you to everyone who makes this, and

every, production possible. It couldn't be done without a musical director, props goddess, costumer, light designer, set designer and builders, sound and lighting technicians, and every volunteer who helps at each performance. You are seen and appreciated!

- Michelle Koenen

**ACCESS
SECURITY Inc**

Patrick Miess
Owner/ Operator

1112 Kresky Ave
Centralia, WA 98531

patrick@alwayssecure.net
(360) 330-1384

ABOUT THE DIRECTOR



Michelle Koenen, Director

Michelle is so excited to be directing this production of *White Christmas*. She previously directed several holiday productions, including *The Santa Interviews* and *The Night Hanukkah Harry Saved Christmas*. These, among others, were student productions. In early 2022, she directed a *One From the Shelf* production of *Charley's Aunt* at the Evergreen Playhouse.

White Christmas is her first full theatrical production and she is excited to be sharing it with such a fantastic cast and crew. She is particularly grateful to her stage manager, Danielle Kays, for her guidance and organization, but especially for sparking an interest in the technical (and very magical) side of theater. Though Michelle loves performing onstage and has been in several shows at the EP, including recent productions of *A Murder is Announced* and *Mamma Mia!*, she is thrilled to be directing. Please come along on her adventure beyond the stage and enjoy the show!



Theresa McKenzieSullivan, Vocal and Music Director

Theresa has been involved with local theatre for over 20 years. She is most active with the Evergreen Playhouse and the Tenino Young-at-Heart Theatre, and has also worked with the Olympia Family Theatre and Centralia College. She happily serves on the Board of Directors at the Evergreen Playhouse and teaches band and Shakespeare at St. Michael's School.

She loves the theatre world and enjoys contributing in any context, be it on stage, working on the set, as a musician in the orchestra pit, or as music director.

CAST BIOGRAPHIES



Emilie Brown, Martha

Emilie is thrilled to be returning to the EP stage as Martha, having recently been behind the scenes directing. You may remember her from some of her previous EP roles as Annelle in *Steel Magnolias*, Yonah in *Children of Eden*, and the murderous Hot Blades Harry in *Urinetown*. Other favorite roles from around the South Sound include Queen Aggravain in *Once Upon A Mattress*, Betty Rizzo in *Grease*, and Ballas in *The Memorandum*. Emilie hopes you enjoy the show, and that you'll return to enjoy the rest of this great season.

CAST BIOGRAPHIES



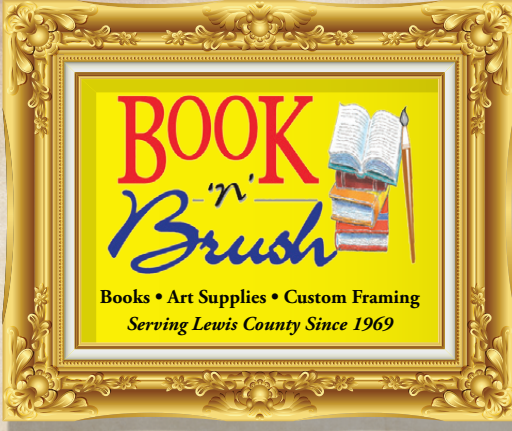
Asia Conner, *Assistant Seamstress/Ensemble*

Asia began her involvement with theater when she attended high school. She performed in the productions of *The Purloined Letter*, *Cinderella*, *Rosie the Riveter*, *Arsenic and Old Lace*, and *The Buccaneer Bride*. Her work at the Evergreen Playhouse included backstage tech crew for the production of *Blithe Spirit* and, more recently, she performed onstage in the production of *Mamma Mia!*. She is thrilled to be performing on stage again at the Evergreen Playhouse in *White Christmas!*



Lizzie Conner, *Judy*

Lizzie began her involvement in the performing arts at the beginning of the pandemic. She was in performances of *She Kills Monsters* as Tillius, as well as Peaseblossom in *A Midsummer Night's Dream* for TOAD. She also performed in the 10 Minute Musical performance at Tacoma Musical Playhouse in the show *Dead Flowers*. At the Evergreen Playhouse she was seen in *Shootout At Sadie's Saloon* as Prudence and she ended last year's season with *Mamma Mia!*, as Ali. She's even more thrilled to bring the role of Judy to life on stage and be involved in a show once again at the Playhouse. Enjoy the show!



Books • Art Supplies • Custom Framing • Art Classes
Gifts • Scarves • Vintage & Artisan Jewelry • Cards
Children's Toys • Candy • Special Orders

Celebrating
53
Years

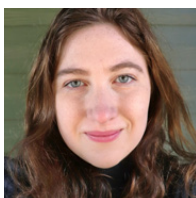


Located in Historic Downtown Chehalis - Exit #77 off I-5

360-748-6221 • 518 N Market Blvd • Chehalis, WA 98532

BookNBrush@gmail.com • www.booknbrush.com • Mon-Sat 10-6 and Sunday 11-4

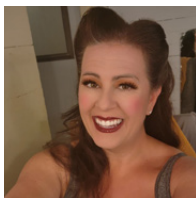
CAST BIOGRAPHIES



Emily Fitzgerald, *Tessie/Seamstress/Ensemble*

Emily is thrilled to join in her second production at the Evergreen Playhouse. She moved to Centralia from Hood River, Oregon, in January 2021 and works as a reporter for The Chronicle. Emily rediscovered her love of acting during a production of *Jesus Christ Superstar* her senior year of college and has had roles in *Our Town*, *The Foreigner*, *Dr. Faustus*,

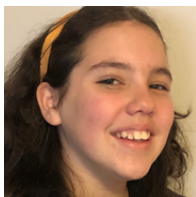
and *Five Women Wearing the Same Dress*. She was last seen at the Evergreen Playhouse as Nurse Flinn in *One Flew Over the Cuckoo's Nest*.



Nicole Galyean, *Rhoda*

Nicole joined the EP family in 2012 where she starred in her very 1st ever musical *Little Shop of Horrors*. Since then, you may recognize her when she brought the following roles to life; Diana in *Next to Normal*; Miss Adelaide in *Guys & Dolls*, Truvy in *Steel Magnolias*, Ruth Condomine in *Blithe Spirit*, Charlotte Hays in *Moon over Buffalo*, Jacqueline in *Don't Dress for Dinner*;

and Doris in *Same Time, Next Year*. When not on stage, she is a full time state worker, plays year round softball & runs her own business on Facebook "Yellow Boot Creations" specializing in wooden signs, cornhole boards, seasonal decor & more! Nicole is beyond thankful for community theater & the opportunities which have given her the platform to become the actress you see today.



Samantha Gunter, *Show Dance Captain/Ensemble*

Samantha, a home-schooled 7th grader, has grown up around lots of dance and theatre. Her first involvement was with the SOTA Youth Musical Theatre program's production of *Bye Bye Birdie*. She has done several productions with TOAD (*The Show Must Go Online*, *The Lion King Jr.*, *Order Up*, *Beauty and the Beast*, *Cinderella*). A favorite was playing Simba in *The*

Lion King Junior. Samantha was also in *The Best Christmas Pageant Ever* at the Evergreen Playhouse in 2021. She studies voice with Brynn Walker (Singing Scope Studios) and currently takes tap and jazz dance at Centralia Ballet Academy.

Samantha is excited to be involved with the Evergreen Playhouse for *White Christmas* and *Tuck Everlasting* this season.

This Program was Proudly Printed By PostNet!



BIG OR SMALL
WE PRINT IT ALL.



From business cards to banners, PostNet can print everything your business needs.

Two Great Locations To Serve You!

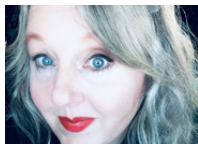
Centralia	Lacey
1121 Harrison Ave	4570 Avery Ln SE, Ste C
360-807-8941	360-459-8981

CAST BIOGRAPHIES



Melyssa Johnson, *Betty*

Melyssa has a passion for music and the arts. She is excited to participate in her first community performance here at the Evergreen Playhouse!



Michelle Lucero, *Rita*

Michelle Lucero is so excited to be back at the Evergreen Playhouse with such an amazing cast and crew for *White Christmas*! This is the sixth production that she has been in here at the EP. Michelle is also a producer/performer with local burlesque troupe Hub City Shimmy and a local variety show troupe. Known in some circles as local royalty, she was the original Miss Yard Birds and is the current Bride of Jake the Alligatorman. When not performing, Michelle enjoys making music with her family, spending time in nature, playing in the ocean, and watching bad movies with her fur babies. Michelle is looking forward to a great run of this stellar show and thanks you all for your continued support of local theatre.

Your Local Community Bank!



Member FDIC

***Convenience. Customer Service Excellence.
Community Involvement.***

ssbwa.com

360.736.0763

CAST BIOGRAPHIES



Dave Marsh, Mr. Snoring Man/Ezekiel/Ensemble

Dave Marsh has been involved with the Evergreen Playhouse for many years. You may remember him last season as Martini in *One Flew Over the Cuckoo's Nest*, Bill in *Mamma Mia!*, and as the father/Director in *The Best Christmas Pageant Ever*. He has also enjoyed acting in other great productions like *Play On!* and *Guys and Dolls* and directing *Scrooge, the Musical* and *Don't Dress for Dinner*. He has also been seen in shows at Centralia College and in the spring, he will be directing a show for the Olympia Little Theater. As always Dave would like to thank his wife Heather for all of her love and support.



Isaac McKenzieSullivan, Sheldrake/Ensemble

Isaac is an actor and director with a BA in theatre arts from Central Washington University. He is the Artistic Director for Tenino Young-at-Heart Theatre, and works for the Thurston County Food Bank. You may have seen Isaac at the EP most recently as Dale Harding in *One Flew Over the Cuckoo's Nest*, or as Snug in TOAD's outdoor production of *A Midsummer Night's Dream*, and he will be directing *Lend Me a Tenor* later this season.

CALLING ALL THEATRE LOVERS!

We need YOU! There are so many people that go into making a play come to life that what you see on stage and in this program is the proverbial tip of the iceberg. Many people lend their assistance along the way from props and costumes to the front of house volunteers. These people don't do it so they can see their name in lights - they do it for the love of theatre and we thank them for sharing their time and talents with us and with you, the audience.

Sign up to volunteer at evergreenplayhouse.com/volunteer

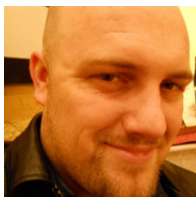


Danielle Kays

GRAPHIC DESIGN
logos, posters, websites, videos
Will work with any budget!

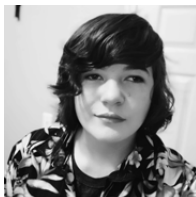
DESIGNSBYDANIELLEK.COM

CAST BIOGRAPHIES



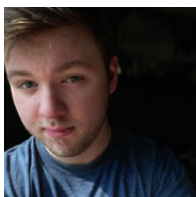
Noah McKenzieSullivan, *Bob*

This is Noah's third time on stage with Evergreen Playhouse. He has also been a part of Tenino Young-At-Heart Theatre since it started and is frequently a part of their productions as well. Noah really enjoys opportunities to create art on stage and get to know other artists.



Jordan McMahon, *Jimmy/Ensemble*

Jordan is very excited to be in his first musical at the Evergreen Playhouse. He has always been an extroverted person who loves the idea of being on stage and being able to entertain people no matter how big or small the role may be. He has enjoyed this passion ever since he auditioned for the Missoula Children's Theater when they came to his elementary school in 4th grade, and was able to land the role of Gulliver for *Gulliver's Travels in Space*. The following year, he played Willy Wonka in *Charlie and the Chocolate Factory*. Now a freshman at W.F. West High School, Jordan's whole family has supported the idea of him acting ever since he mentioned the idea. Now he hopes to continue working with the Evergreen Playhouse for future shows.



Sean-Patrick McNeal, *Phil*

Sean-Patrick has been a performer for nearly his whole life. He had gotten into acting his freshman year of high school when he got the role of Goon in *Rebel Without a Cause* at the EP. He later went on an acting spree in roles such as Shrek in *Shrek the Musical*, Horton in *Seussical*, and many One From the Shelf productions. He was ecstatic to rejoin the EP family as Patrick

Simmons in *A Murder is Announced*, and is incredibly delighted to play Phil Davis in *White Christmas*. He would like to thank his parents, Keisha and Sean McNeal, for their unending support, and his girlfriend, Brittany Wilcox, for always being there for him.

The Evergreen Playhouse is run by a volunteer board of directors. You may contact any of our members by email (theevergreenplayhouse@gmail.com), and you may also apply to be on the board by going to evergreenplayhouse.com/board

The 2022-2023 Board of Directors:
President: Danielle Kays
Vice President: Brenda Crummett
Secretary: Michelle Koenen
Treasurer: Alene Stewart
Members at Large: Shari Blackwell, Emilie Brown, Craig Larsen, Theresa McKenzieSullivan, Tim McPeters, Matthew Michael, and Kris Sloan

“

Centralia College Theatre

Upcoming productions:

The Sneeze

short comedic pieces by Anton Chekhov

Feb 24-March 5

The Sound of Music

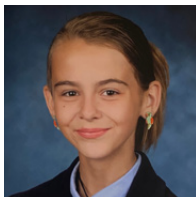
by Rodgers and Hammerstein

May 12-May 21

More info at: www.centralia.edu/theatre

”

CAST BIOGRAPHIES



Betty Snell, Susan

Betty has been delighting her family, including five younger brothers, with her dramatic musical productions since a young age! She found her love of theatre whilst watching her Grandma perform at the Evergreen Playhouse. Betty was in *The Best Christmas Pageant Ever* at the Evergreen Playhouse last year and is thrilled to be back at this beloved theatre. She is in choir at her school, plays the ukulele, and is in upcoming performances at Centralia College. In her spare time she enjoys spending time with her family, reading, creating art, going for walks, and playing with her guinea pigs.



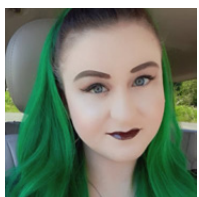
Karsten Tomlin, Mike/Ensemble

Karsten is an 8th grader from Griffin School. He has been acting since the 4th grade, when he played a flying monkey in *The Wizard of Oz, Junior*. Since then, he has enjoyed playing the roles of Maurice in *Beauty and the Beast Jr.*, Mike Teavee in *Willy Wonka Jr.*, and most recently, he stepped in to play Don Price in *Big Fish*. He is excited to make his debut at Evergreen Playhouse as Mike Nulty in *White Christmas*.



Ed Thorpe, General Waverly

Recently Ed has appeared in *Blithe Spirit* here at Evergreen Playhouse, *Into the Woods* at Centralia College, and in Yelm's Standing Room Only productions of *Calendar Girls*, *Mamma Mia!*, *Shrek: The Musical* & *Love's Labour's Lost*. In Olympia during the last few years, Ed has performed in *The Curious Incident of the Dog in the Night-Time* at SPSCC and in shows for The Olympia Little Theatre and Goldfinch Productions. The time it takes Ed to count his blessings has gotten even longer because of this wonderful company. Thanks Michelle. Team Danielle!



Brittany Wilcox, Mrs. Snoring Man/Ensemble

Brittany is ecstatic to be returning to the stage in this production of *White Christmas*. You may have seen her here before in *Don't Dress For Dinner* as Suzanne or in *And Then There Were None* as Vera. Most recently she played Phillipa Haymes in *A Murder is Announced*. Other favorite roles include that of Eponine in *Les Miserables*, Corrie Bratter in *Barefoot in the Park*, Rizzo in *Grease*, and Hope

in *Urinetown*. Brittany would like to thank her mother and Sean-Patrick for their love and support. She hopes you enjoy the show and thanks you for supporting the arts.

Centralia Community Church

a place for real people...[like you!]

real-life teaching
friendly & casual setting
programs for all ages

Join us Sundays at 10am
in-person or streaming live

3320 Borst Ave. | Centralia, WA
360.736.7606 | www.cccog.com

across from Centralia High School



CREW BIOGRAPHIES



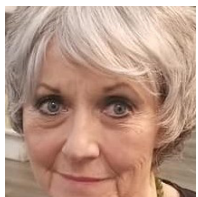
Danielle Kays, Stage Manager

Although Danielle is no stranger to live theater, having been in over 75 plays and musicals as actor, director, and behind the scenes, *White Christmas* marks her first time "calling the show" as stage manager! She thanks Michelle for giving her this opportunity to learn this aspect of theater and for the cast and crew and their eagerness to learn and work at creating this magical show for you. Danielle especially wants to thank her daughters, Ash and Em, who have held down the fort at home and for their support and understanding of the late nights. Merry Christmas and enjoy the show!



Allison Haugan, Costumes

Allison has been costuming shows for about 5 years and this show has really stretched and challenged her in many ways. It has been a wonderful experience and working with the cast and the crew has been a joy. She could not have finished this show without the help and support of her family; David, Daniel, Ethan, Felix, Jessie, and Aaron have given of their time, ideas, words of encouragement, and being all-around helpful. Thank you so much for all you do to support her. Allison hopes you enjoy the show and have a wonderful holiday season!



Alene Stewart, Set Pieces/Properties

Alene (Al to her friends) became a member of the Evergreen Playhouse in March, 2013 when she volunteered to decorate the set of Shakespeare's *Midsummer Night's Dream*. Her first on stage role was as Prospera in Shakespeare's *The Tempest*. Her favorite role was Mother in a staged reading of *Night Mother* by Marsha Norman. But her dream role was as Claree Belcher in *Steel Magnolias* by Robert Harling. She marks Lillian Troy in *I Hate Hamlet*, and Ethel in *Moon Over Buffalo* as among her favorite roles to play. She is looking forward to making many more great memories with the 2022-2023 Season. Alene has also been heavily involved in props and set dressing for many shows. She loves the challenge of creating those props and set pieces. Some of her favorite creations are the vintage microphones for *Alfred Hitchcock: A Live Radio Play*, a bleeding garrotte for *Deathtrap*, a radiator heater made out of cardboard and pvc pipe for *Barefoot in the Park*, a tree trunk constructed of a sono tube/chicken wire and paper mache for *Children of Eden*, and most recently, the sets for *One Flew Over the Cuckoo's Nest* and *Mamma Mia!*. Alene also serves as the Treasurer for Evergreen Playhouse. She invites each and everyone of you to come and join the joy and excitement, the challenges and triumphs, the fun and the hard work that is community theater. There is always room for one more volunteer. Let that one more be you.

CREW BIOGRAPHIES



Theresa McKenzieSullivan, Set Design, Construction, & Scenic Painter

Theresa has been involved with local theatre for over 20 years. She is most active with the Evergreen Playhouse and the Tenino Young-at-Heart Theatre, and has also worked with the Olympia Family Theatre and Centralia College. She happily serves on the Board of Directors at the Evergreen Playhouse and teaches band and Shakespeare at St. Michael's School. She loves the theatre world and enjoys contributing in any context, be it on stage, working on the set, as a musician in the orchestra pit, or as music director.



Mark Pendleton, Set Construction

Mark has been happily involved for decades with the Evergreen Playhouse from acting, to set building, to Board Member. He helped all last year with set builds. Recently, he was seen as an Aide in *One Flew Over the Cuckoo's Nest*, Nicely Nicely in *Guys and Dolls* and Caldwell B. Cladwell in *Urinetown*. Mark is now retired and enjoys time at what he loves most - working at the Newaukum Golf Proshop and swinging the clubs on the course. Love to Tyler and Stacia.



Isaac McKenzieSullivan, Set Construction

Isaac is an actor and director with a BA in theatre arts from Central Washington University. He is the Artistic Director for Tenino Young-at-Heart Theatre, and works for the Thurston County Food Bank. You may have seen Isaac at the EP most recently as Dale Harding in *One Flew Over the Cuckoo's Nest*, or as Snug in TOAD's outdoor production of *A Midsummer Night's Dream*, and he will be directing *Lend Me a Tenor* later this season.

COMING UP AT THE EVERGREEN PLAYHOUSE!

Tickets available online at evergreenplayhouse.com/tickets

\$15/\$12 for plays, \$18/\$15 for musicals



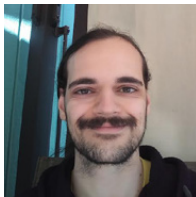
CREW BIOGRAPHIES



Danielle Kays, Light Designer

Danielle has designed lights at the Evergreen Playhouse since 2015 and her work has also been seen in other local productions at Centralia College (*1984, Antigone, You Can't Take it With You, Fun Home*), TOAD (*Mulan, Jr., Once Upon A Matress, Same Time Next Year*) and with Tenino Young-at-Heart (*Just So*). Some favorites include *Next to Normal, The Secret*

Garden, Godspell, Children of Eden, The Diary of Anne Frank, A Christmas Carol, A Few Good Men, and *Grease*. designsbydaniellek.com/light-design



Noah Lyons, Sound Operator

Noah is excited to be working with the Evergreen Playhouse and their production of *White Christmas*. This will be Noah's second time running the tech for EP. He has also done tech for *Mamma Mia!* (sound) and *A Murder is Announced* (sound and lights). Noah has also worked as a sound engineer for Yelm's Standing Room Only, and their productions of *Monty Python's*

Spamalot, The Mousetrap, and *12 Angry Men*. Noah loves working tech for plays and other live events, and hopes to make a career out of it.



Cora Dailey, Light Operator

This production will be Cora's first doing tech for the Evergreen Playhouse -or for anyone- and she is very excited! Cora has worked with the EP before, selling tickets, and had a great experience! She wanted to get more involved, so she is very happy to have the opportunity to do so for this production of *White Christmas*.

Welcome to the Evergreen Playhouse. If this is your first time here, or you are a "seasoned" patron, we are glad you chose to spend your time with us! A few reminders:

- Masks are not required but strongly recommended.
- Our performers love to hear you laugh or interact when appropriate with our productions. But please remember that sound carries here and we'll be able to hear your conversations, too!
- Food and drink may be purchased in the lobby and you are welcome to bring them back to your seat. Garbage cans are available by all exits or at the back of the house.
- Please turn off your cell phones - they didn't have those in 1954!
- Do not step on or cross our stage. Besides being a tripping hazard, props and set pieces are in specific spots and we don't want them to get bumped. Thank you!
- Please no video recording or flash photography. Actors will be in the back lobby after the show if you would like to meet them.
- Feel free to keep this program! But if you want to recycle it, a basket will be on the counter as you leave.
- Finally, we appreciate your patronage and support of this local gem. Sit back, enjoy the show, and Happy Holidays!



Full Menu!

Lunch Served Daily
Friday & Saturday Prime Rib
Dinner & Beer Pairing
Handcrafted Sausage
Hickory Smoked Meats
11 Dick's Beers On Tap
Gift Boxes
Dick's Brewing Company
Beer & Merch Available

Tasting Room Open
Fri & Sat 3:00-7:30 pm
(Must be 21)

12 Dick's Beers on Tap
6-packs, Cases, Variety Packs
Apparel and Merchandise
Available



www.DicksBeer.com

Dick Young launched NW Sausage & Deli in 1983 and Dick's Brewing Company in 1994. His goal was to combine his two favorite passions: smoked meat and beer. Today, you can enjoy the same great smoked meat recipes and 20 craft brew varieties. Cheers!

Mon-Thurs 9:30-5:00 Fri-Sat 9:30-9:00
5945 Prather Rd SW | Centralia, WA | 800.586.7760

Brewery Open: Fri & Sat 3:00-7:30
3516 Galvin Rd | Centralia, WA | 360.736.1603



HOTEL, PUB & MOVIE THEATER

Northwest pub fare • Seasonal specials • Kids' menu
Handcrafted ales, wines, ciders & spirits

Open daily, 7 am - late



112 N Tower Ave • Centralia • (360) 736-5164
mcmenamins.com



Pet friendly